

# HERE We Grow

MONTHLY HEADLINES FROM THE ESC OF LAKE ERIE WEST COMMUNITY SCHOOLS CENTER



## DIRECTOR'S HEADLINES

After 17 incredible years with the ESC of Lake Erie West, Algott (Augie) Herman has decided to retire. Augie has been much more than a Regional Technical Assistance Educator; he's been a cornerstone of our team, a dedicated colleague, and a friend to everyone he met. Known for his sharp sense of style, practical wisdom, and warm, welcoming nature, Augie truly didn't know a stranger. Whether offering sound advice or simply brightening someone's day, his presence has left an indelible mark on us all.

As Augie embarks on this new chapter, we wish him nothing but the best. Thank you, Augie, for your years of service, your kindness, and the countless memories.

You'll be greatly missed!



← 8

### MORE INSPIRING READS THIS MONTH:

Office of Comm. Schools	2
School Spotlight	3
Governing Authority	4
Academic Services	5-6
Compliance	7
Special Education	8
Professional Learning	9-10
ESCLEW Staff	11

### OUR MISSION

"The ESCLEW Community Schools Center is a student-centered authorizer of charter schools, advancing quality educational opportunities throughout the state of Ohio"

# Headlines from the Office of Community Schools

## CTE-26 PROVIDER APPLICATION WORKSHOPS

The Career-Technical Education (CTE) provider application system opened on December 10, 2024, for submitting new and renewal CTE-26 applications for the FY2026-2030 program cycle. The CTE-26 application grants schools the authorization to deliver career-technical education programs for students in grades 7-12. Public school districts, STEM schools, and community schools can access applications for Career-Field Pathways, Career-Based Intervention, Family and Consumer Sciences/GRADS, Industry Credential Senior-Only, and Innovative Pathways through the [OH|ID Portal](#).

All applications for the FY2026-2030 cycle, including new submissions and renewals, must be completed by March 1, 2025. Renewal applications apply exclusively to providers with approvals set to expire at the end of the FY2021-2025 cycle. Schools are required to renew their CTE-26 applications during the year they are set to expire.

To assist schools and districts, the CTE-26 process page provides additional guidance and [resources](#). For further support during the application process, applicants can reach out to their [Ohio College Tech Prep Regional Centers](#) and [Career-Technical Planning District](#) leads. Regional Centers will also conduct CTE-26 Submission workshops to provide hands-on assistance with the application process.

For a list of Submission Workshop dates, locations, and times, please click [here](#).

## DIGITAL LEARNING ANNUAL CONFERENCE

Coming soon is the [Digital Learning Annual Conference \(DLAC\)](#). This event will be February 24-26, 2025, in Atlanta, GA and is hosted by the Digital Learning Collaborative (DLC), of which Ohio is a state affiliate. During this event the Office of Community Schools will be hosting a state meet up!

DLC is a membership community dedicated to highlighting digital learning issues, sharing research, and promoting best practices to enhance education for all students.

[Learn more](#) about DLC and this partnership.

## OHIO EDTECH CONFERENCE (OETC)

The [OETC \(Ohio Educational Technology Conference\)](#) is one of the premier Primary-20 state educational technology conferences in the country. Each year, educational technology professionals come together to explore how schools are bringing teaching and technology together to enhance learning in Ohio. OETC will be held from February 11-13, 2025. The Department will be presenting over 300 educational sessions.

This conference is designed to cultivate partnerships and networks, promote collaboration, deliver high-quality information, and show where and how technology can be incorporated into today's classroom.

# School Spotlight

## CONSTELLATION SCHOOLS: PARMA COMMUNITY

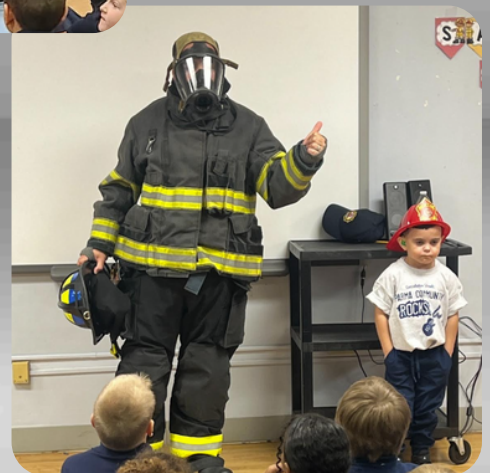
### Building a Safer School Community Together

Constellation Schools: Parma Community Elementary (PCE) recently hosted an exciting Safety Assembly led by the school's Safety Committee.

The event featured special guest Mr. Preseren from the Board Office, who highlighted the importance of safety drills and maintaining a secure school environment. His insights encouraged students to be proactive in their safety routines.

PCE also welcomed Mr. Overstreet, a parent and Cleveland Firefighter, who captivated students with a hands-on session on fire safety. He demonstrated life-saving techniques like Stop, Drop, and Roll, emphasized the critical importance of closing bedroom doors while sleeping, and shared other essential tips to keep families safe.

Students left the assembly informed, empowered, and ready to take charge of their safety at school and at home!



**Thank you Constellation Schools: Parma Community  
for your dedication to your community's safety!**

# Governing Authority Headlines

Written by Julie Kadri

## **A NEW YEAR, A NEW OPPORTUNITY TO THANK OUR SCHOOL BOARD MEMBERS**

**As we step into 2025, we reflect on the incredible dedication and service of our school board members. Your leadership and commitment have been essential in shaping the educational experiences of our students and ensuring that our schools continue to thrive.**

**The challenges of the past year have been met with resilience, creativity, and an unwavering focus on the well-being of our community. You have worked to support teachers, students, and families, making decisions that have paved the way for progress and growth.**

**As we welcome the new year, we take this moment to express our deepest gratitude for your hard work, dedication, and vision. Your efforts are truly appreciated, and we look forward to the continued collaboration and success in the months ahead. Together, we can make 2025 another year of growth and achievement for our students and schools.**

**Thank you to our school board members for your unwavering commitment to our communities and our future!**

# Academic Services

# Headlines

Written by Kristi Hayward

## ED PLAN – WHAT'S YOUR TIMELINE?

It's that time of year to begin considering where your school is within the ED STEPS process. The timeline you will be required to follow is aligned with your school's assigned cohort. If you are not sure of your cohort number, please feel free to reach out to your ESCLEW Regional Technical Assistance Educator or the Academic Services Team Leader to confirm.

**Cohort 1** – First year of plan. Revise plan as needed to ensure plans are in “approved” status. If they have not been approved or are in need of revision, this should happen in January so they have plenty of time to collect data that aligns with the plan. This data will be submitted into the new Support Schools tool during the second year of the plan.

**Cohort 2** – One Needs Assessment (ONA) is open, and the school should be sending over their priority needs to the One Plan. You will find that the optional questions on the ONA have been eliminated. Your assistance and reminders to your schools on the importance of collecting and analyzing data are extremely beneficial. This practice provides a solid foundation for a well-written and implemented One Plan. Schools identified for support must include a literacy goal in their One Plan.

**Cohort 3** – This group of schools will be the first to participate in the newly designed Support Schools Tool. The new design is very “user-friendly” and will take minimal time to complete. Upcoming trainings are currently being scheduled. Your local State Support Team regional consultants will be able to assist with the completion of the support tool.



# Academic Services Headlines

Written by Kristi Hayward

## WHO'S HERE?

Winter break is a wonderful time for students and staff to rest, relax, and recharge for the remainder of the school year, but it is critical for the culture of the school and the academic growth of students for the return to school to be impactful, powerful, and consistent. The January compliance site visit will focus primarily on student attendance practices and procedures.

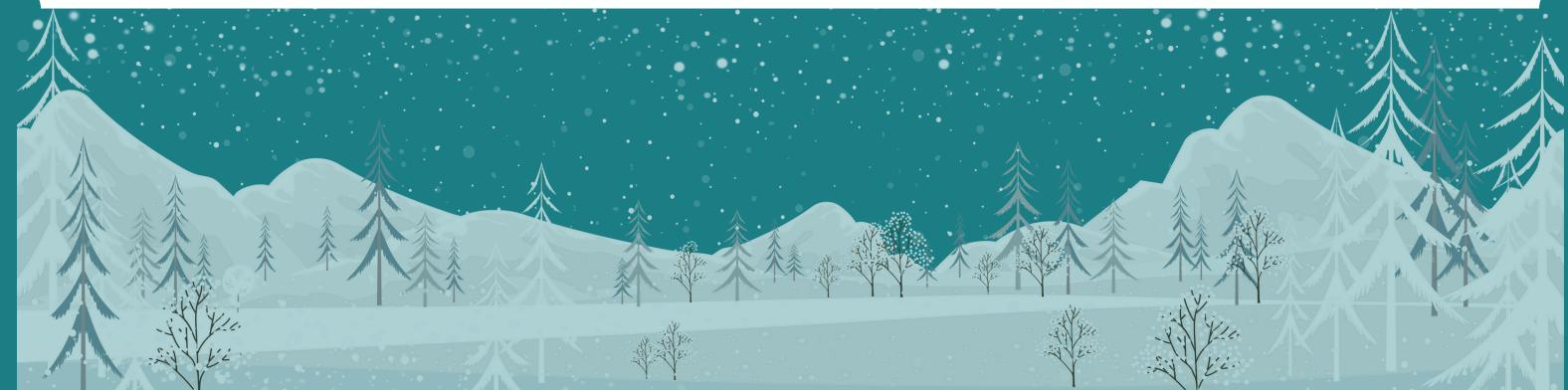
Did you know . . .

- K-3 students who were never chronically absent were over 6 times more likely to meet the 3rd Grade Reading Guarantee.
- High school students who were never chronically absent were 9 times more likely to graduate on time.
- Last year, on average, over 18% of students in the Toledo area were chronically absent. 25% were chronically absent state-wide.

The ESCLEW is offering a Professional Learning opportunity that will focus on sharing research-based strategies to support the improvement of School Attendance. The session is planned for one (1) hour via Zoom and is free to all community schools sponsored by the ESCLEW.

January 8, 2025 – 3:30 – 4:30 pm OR January 9, 2025 – 9:00 – 10:00am

Registration - <https://www.locallevelvents.com/events/details/37099>



# Compliance Headlines

## ITEMS OF NOTE - JANUARY 2025

Please note, ESCLEW is asking schools to send **original signed fall modifications and evidence of board approval** (approved meeting minutes or resolution) to the Community Schools Office **via postal mail** in addition to the Epicenter tasks for these items. **If the school uses a secure electronic document signature system to sign the modification, there is no need to mail it via post.**

### School Submissions

- **#715 Information and Training Regarding Sudden Cardiac Arrest** – Any school involved in interscholastic athletics must require coaches to complete training on sudden cardiac arrest, AND each participating student must submit the required designated school official form as specified in ORC 3313.5310. In Epicenter, please submit evidence of training and one copy of designated school official form.
- **#974 Political Beliefs Policy** – **This is a new policy that requires board approval.** Please submit into Epicenter a copy of **the policy** and evidence of making applicable materials publicly available (**screenshot of school website**, etc.) AND **proof of board adoption** of the policy.
- **#975 Religious Expression Policy** – **This is a new policy that requires board approval.** Please submit into Epicenter a copy of **the policy** and evidence of making applicable materials publicly available (**screenshot of school website**, etc.) AND **proof of board adoption** of the policy AND a **list of applicable holidays and festivals** as required by ORC 3320.04.

## January 2025

Compliance Requirement	Due Date	Type	Responsibility
------------------------	----------	------	----------------

### Monthly Financial

Financial Reports - December	January 15	Submission	Linda
#517-B Fiscal Officer Waiver	January 31	Submission	Linda

### Board Submissions

Approved Governing Authority Meeting Agenda	2 Weeks After Meeting	Submission	Regional Rep
Approved Governing Authority Meeting Minutes	2 Weeks After Approval	Submission	Regional Rep

### School Submissions

#122 State Diploma Seals (Secondary Schools)	January 31	Submission	Julie
#123 Requirements for High School Graduation; Workforce or College Preparatory Units (Secondary Schools)	January 31	Submission	Julie
#715 Information and Training Regarding Sudden Cardiac Arrest	January 31	Submission	Julie
#974 Political Beliefs Policy	January 31	Submission	Julie
#975 Religious Expression Policy	January 31	Submission	Julie

### Financial Submissions

**#517-B Designated Fiscal Officer – Bond – Licensing** – Please submit into Epicenter the governing authority approved resolution waiving the requirement that the school's governing authority employs or contracts with the designated fiscal officer. If this is not applicable, please type N/A in the task narrative.

If you have any questions, please contact Julie Kadri.

# Special Education Headlines

Written by Jessica Bair and Heather Tester

## DO YOU KNOW THE DIFFERENCE BETWEEN SIGNIFICANT DISPROPORTIONALITY AND SIGNIFICANT REPRESENTATION?

In Phase 2 of the Special Education Profile, districts received data on Disproportionate Representation (Indicators 9 & 10) and Significant Disproportionality, two separate federal IDEA equity requirements.

### Key Differences:

- **Disproportionate Representation** focuses on overrepresentation of racial groups in special education, including specific disabilities, for students ages 5 through 21.
- **Significant Disproportionality** includes ages 3 through 21 and also considers restrictive placements or disciplinary actions.

### Other Distinctions:

- **Significant Disproportionality** allows for reasonable progress in calculations and mandates redirection of funds, while Disproportionate Representation does not.

**Shared Methodology:** Both use a risk ratio comparing the likelihood of identification for special education between groups.

To learn more please visit the [Equity in Special Education](#) website and watch this [video](#) put together by the Office of Exceptional Children.

## SPECIAL EDUCATION PROFILES

Special education profiles are set to release in January. This first phase of the 2024-25 Special Education Profile contains indicators 1, 2, 4, 8, 9, 10, 11, 12, 13, 14, Alternate Assessment, and Significant Disproportionality. Phase 2, including indicators 3, 5, 6, 7, and 18, and enrollment data is targeted for release in May 2025.


## 2025 ACT AND SAT REGISTRATION

Do you have students that require accommodation support for the state funded ACT and SAT? Make sure you request and get approved for those accommodations prior to the late registration date. For more information click [here](#).



# Professional Learning Headlines

Our Winter 2024 - 2025 Professional Learning Newsletter is now published. Please take a few moments to read about the upcoming professional learning available as well as consultation services that are always available and ongoing.



**ESC of Lake Erie West  
Community School  
Professional Learning  
Resources**

Please see our new curriculum page included in the Professional Learning Website to discover additional resources.

## EDUCATIONAL SERVICE CENTER

OF LAKE ERIE WEST

**Date:**

January 22, 2025

**Location:**

ESC of Lake Erie West  
2275 Collingwood Blvd.  
Toledo, OH 43620

**Time:**

8:30 AM - 11:30 AM

**Contact Hours:**

3 hours

**Target Audience:**

Any educators, staff, district leaders or other school personnel working directly with students.

**Contact:**

Elizabeth Kregel,  
[ekregel@eslakeeriewest.org](mailto:ekregel@eslakeeriewest.org)

**Cost:**

Scan or click below for cost and registration information

**To register and pay,  
click or scan here:**



Aligns with the Ohio Department of  
Education & Workforce's 4 Priorities

- Literacy
- Learning Acceleration
- Student Wellness
- Workforce Readiness

# TRAUMA AND AMYGDALA HIJACKS

**This training is broken into two parts.**

**During the first part of this training, participants will learn about:**

- How - trauma re-wires the brain and how and why students of all ages can experience amygdala hijacks.
- How - an amygdala hijack occurs when the amygdala overrides a person's ability to respond rationally to a perceived threat.
- Why - we often see students extremely escalated and exhibiting violent behavior during these events.
- Why - this type of behavior is especially common in kids who have experienced trauma.

**During the second part of the training we will discuss:**

- How - educators can safely and effectively manage "hijacked" students and get to the root cause of the behavior.
- Why - punitive measures don't work
- What - we can do instead.
- How - trauma explains the behavior, but it does not excuse it.



# ESCLEW Staff

## Superintendent

Sandra C. Frisch

## ESCLEW Governing Board

Jeff Bunck

Jared Lefevre

Brent Buehrer

Thomas Ilstrup

Joan Kuchcinski

## Treasurer

Richard A. Cox

## Director

Kurt A. Aey

## Administrative Offices

2275 Collingwood Blvd.  
Toledo, OH 43620  
(419) 245-4150

## Community Schools Center

4955 Seaman Rd.  
Oregon, OH 43616  
(419) 246-3137

[www.esclakeeriewest.org](http://www.esclakeeriewest.org)

## COMMUNITY SCHOOLS CENTER

### CONTACT INFORMATION

#### DIRECTOR, COMMUNITY SCHOOLS CENTER

Kurt Aey (419) 246-3142

#### TEAM LEADER, ACADEMIC SERVICES    TEAM LEADER, OPERATIONS

Kristi Hayward (419) 214-3893

Julie Kadri (419) 724-4288

#### SCHOOL IMPROVEMENT AND ACADEMIC SPECIALIST

Aimee Mendelsohn (419) 280-1661

#### SPECIAL EDUCATION SPECIALISTS

Jessica Bair (419) 367-3562 and Heather Tester (419) 260-4793

#### FINANCIAL CONSULTANT

Linda Moye (419) 724-4291

#### ADMINISTRATIVE ASSISTANT

Natalie Miller (419) 246-3137

## IN NEED OF TECHNICAL ASSISTANCE?

Contact your school's regional technical assistance educator (RTAE) for direct support related to on-site visits, governing authority updates, compliance, academics, and more.

**Brittany Beck**

(419) 461-5375

**DeAnna Hardwick**

(330) 591-0217

**Allison Lentz**

(419) 260-7708

**Joyce Lewis**

(419) 290-4759

**Jennifer Little**

(419) 360-8213